



### Production specifications:

PERFORMANCE LIL TRA-STABLE *Service: Oxygen.*  
 ADVANCED FUNCTIONS  
 CONVENIENT OPERATION

\* Special requirements  
 can be customized

**Wetted Materials:** Acrylic and electroplated brass, SS

**Ball Float:** Stainless steel ; Agate; O-ring: NBR.

**Temperature Limit:** 32-140°F (0-60°C).

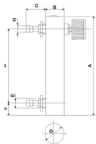
**Pressure Limit:** 29 psi (2.0 bar).

**Accuracy:** ±4% of full scale.

**Connection:** 1/4" I.D. Tubing.

**Mounting:** Vertical.

## DF-6TO2 Series (old model: LZM-6T02)



DF-O serial flow meter, which is made of Acrylic, is used to measure the single-phase non-pulsing flux of liquid or gas. It is featured in beautiful look, low weight and long life span.



For Order, please specify the model, specification and code.

Model Regulating Valve Measuring Range Material of the fitting Material of the O-ring

DF - 6T O2

### The Outline Size Of DF-6TO Series Flow Meter

Model	Measuring Range (L/min)	Connection type	Accuracy	Outline Size (mm)										
				A	B	C	D	E	F	G	H	I	J	
1	1.1	1/4"	±0.5%	60	25	25	60	10	10	10	10	10	10	10
	1.1			75	25	25	75	10	10	10	10	10	10	
2	0.1	1/4"	±0.5%	60	25	25	60	10	10	10	10	10	10	
	0.1			75	25	25	75	10	10	10	10	10		
4	0.1	1/4"	±0.5%	60	25	25	60	10	10	10	10	10	10	
	0.1			75	25	25	75	10	10	10	10	10		
DF-6TO2	0.1-1.1	1/4"	±0.5%	60	25	25	60	10	10	10	10	10	10	
	0.1			75	25	25	75	10	10	10	10	10		
4	0.1	1/4"	±0.5%	60	25	25	60	10	10	10	10	10	10	
	0.1			75	25	25	75	10	10	10	10	10		
7	0.1	1/4"	±0.5%	60	25	25	60	10	10	10	10	10	10	
	0.1			75	25	25	75	10	10	10	10	10		

DF-6TO The material and code of the parts of

Part Name	Material	Code	Part	Code
Frame	Acrylic	0100	O-ring	0200
Ball	SS	0300	Adjuster	0400
Tube	1/4" I.D.	0500	Connector	0600
O-ring	NBR	0700	Cap	0800